

#### SPARE PARTS LIST

Soldering and heating insert STARLET

Type of gases: propane, methane, MAPP, ethylene

#### LISTE DES PIÈCES DE REMPLACEMENT

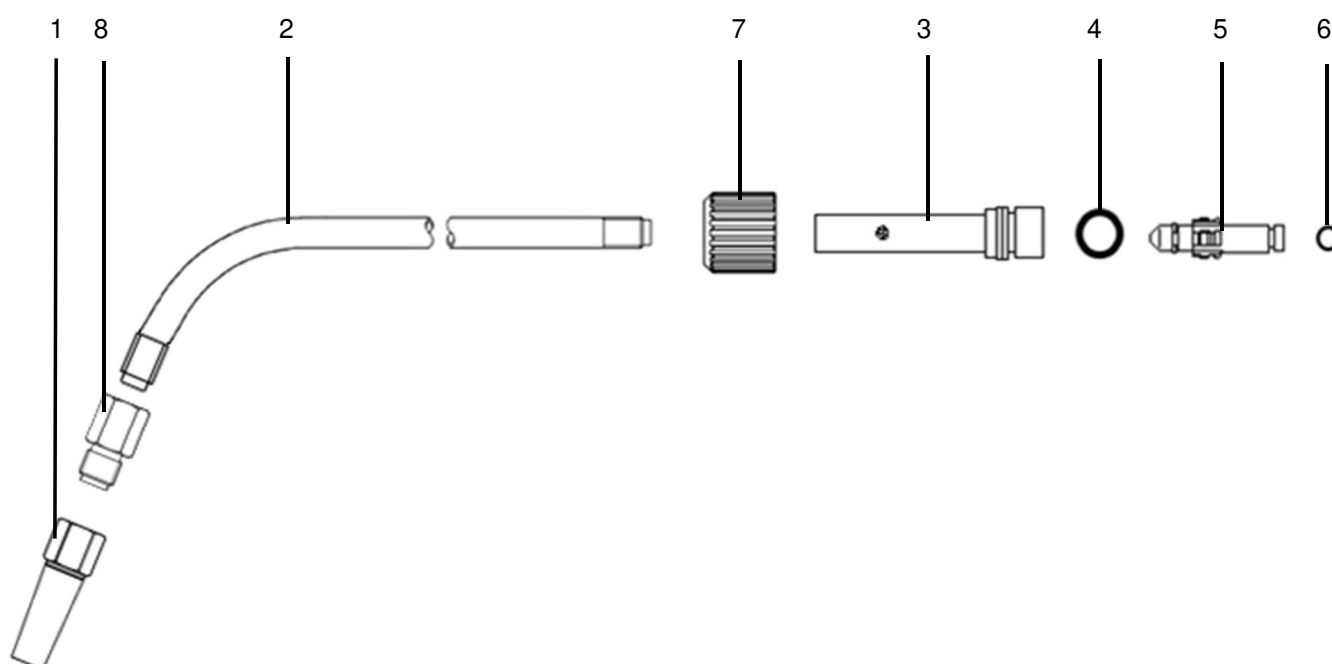
Inserte de brasage et chauffage STARLET

Type de gaz: propane, méthane, MAPP, éthylène

#### LISTA DE REQUERSTOS

Inserto de soldadura y calentamiento STARLET

Tipo de gas: propano, metano, MAPP, etileno



Pos. Item Pos.	Benennung Description Désignation Nombre	Sach. Nr. / Art. no. No. d'article / Art. No.		
<b>1 - 8</b>	<b>Löt- und Wärmeinsatz STARLET</b> Soldering and heating insert STARLET Inserte de brasage et chauffage STARLET Inserto de soldadura y calentamiento STARLET	<b>Z - PMYE</b>  <b>Gr. 6 ES</b> 716.51712	<b>Z - PMYE</b>  <b>Gr. 8 ES</b> 716.51713	<b>Z - PMYE</b>  <b>Gr. 10 ES</b> 716.51714
<b>1</b>	<b>Wärmdüse</b> Heating nozzle Buse de chauffage Boquilla de calentamiento	716.01233	716.01234	716.01235
<b>2</b>	<b>Mischrohr</b> Mixing pipe Tube de mélange Tubo de mezcla	716.51708	→	716.51709
<b>3</b>	<b>Mischdüse</b> Mixing nozzle Buse de mélange Boquilla de mezclado	716.51702	→	→
<b>4</b>	<b>O-Ring 11 x 2</b> O-ring Joint torique Junta tórica	0.329.527	→	→
<b>5</b>	<b>Druckdüse</b> Pressure nozzle Buse de pression Boquilla de presión	716.05184	716.05187	716.05188
<b>6</b>	<b>O-Ring 5 x 1,5</b> O-ring Joint torique Junta tórica	673.29059	→	→
<b>7</b>	<b>Anschlussmutter</b> Connecting nut Capuchon de record Tuerca de conexiona	543.50110	→	→
<b>8</b>	<b>Gewindenippel</b> Threaded nipple Raccord fileté Niple roscado	M12 x 1,5 716.51705	M14 x 1,5 716.51706	→

Bitte Reparaturanleitung beachten  
Please follow the repair instructions  
Veuillez respecter les intructions de reparacion  
Rogamos prestar atencion a las instrucciones de reparaci3n

Änderungen vorbehalten  
Subject to alteration  
Droit de modification reserve  
Salvo modificaci3n

MESSER Cutting Systems GmbH  
Otto-Hahn-Str. 2-4  
D-64823 Groß-Umstadt  
Tel.: +49 (0) 6078 787-0  
Fax: +49 (0) 6078 787-150  
E-Mail: [info@messer-cutting.com](mailto:info@messer-cutting.com)

© Messer Cutting Systems  
® = registriertes Warenzeichen  
Quality management system